

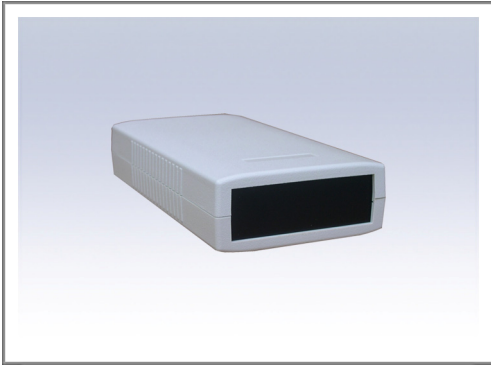
# D2300 Series Speed Dome Protocol Converter

**VIDEOTREC**



## Introduction

D2300 is a protocol converter that communicates between your existing speed dome and our series keyboard controller or video management software in PC. An RS485 communication port makes it possible for the control units to manipulate speed dome of various brands. Besides, the D2300 Speed Dome Protocol Converter also provides lighting control and alarm action functions.



## Main Features

- Receives the command signal from our series keyboard controller and execute the command.
- Controls speed dome's Pan/Tilt, up/down/left/right and iris/focus/zoom of motorized lens.
- Camera power switch.
- Controls Samsung, Panasonic, Kalatel, Pelco, Lilin and Dynacolor series speed dome.
- Offers full variable speed control and faster preset position capability.
- With surge and high voltage protection.

## Technical Specification

- Transmission rate: 1200 ~ 19200bps.
- Transmission type: Twist pair wire, RS485.
- Power for camera: AC24V and AC12V, selectable.
- Manual control or alarm trigger relay.
- With auto detect signal output facility.
- Power supply: AC90 ~ AC260/60Hz.

## Order Information

- D2301 Samsung Speed Dome Protocol Converter
- D2302 Panasonic Speed Dome Protocol Converter
- D2303 Kalatel Speed Dome Protocol Converter
- D2304 Pelco Speed Dome Protocol Converter
- D2305 Lilin Speed Dome Protocol Converter
- D2306 Dynacolor Speed Dome Protocol Converter

Copyright by 2007 Eastel Taiwan, Inc.