

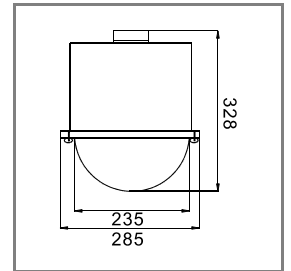
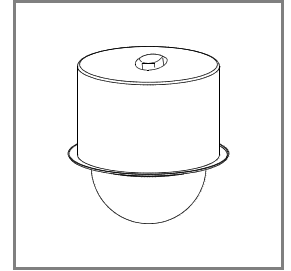
VIDEOTREC Series ENCLOSURE

VIDEOTREC



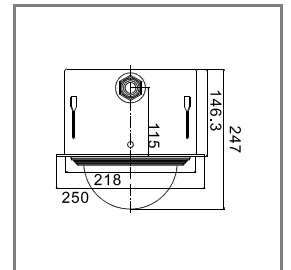
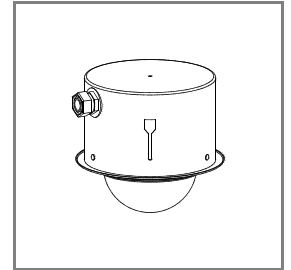
VT-12H 9" Ceiling Mount Dome Enclosure

- Fire Retardant ABS Housing.
- 9" Tinted Acrylic Dome Cover.
- Optional heater and fan to maintain working temperature.
- Quick On/Off dome cover for installation & maintenance.
- Panel Mounting Hole: 255 mm
- Meet IP33 Protection level.



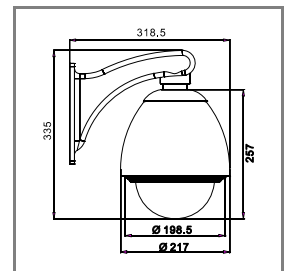
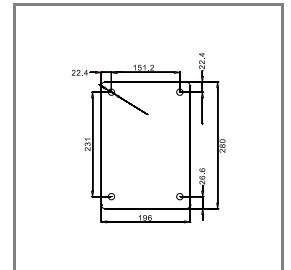
VT-16H 6" Ceiling Mount Dome Enclosure

- 6" Aluminum Dome Enclosure, 6" Tinted Acrylic Dome Cover.
- Optional heater and fan to maintain working temperature.
- Quick On/Off dome cover for installation & maintenance.
- A stainless steel retaining cable.
- Panel Mounting Hole: 225 mm
- Fluorocarbon Baking Varnish: Endurable environment, resistible acid & base, five years warrant. (Optional)
- Meet IP33 protection level.



VT-16W 6" Aluminum Alloy Enclosure

- 6" Aluminum Dome Enclosure, Suitable for outdoor and indoor installation.
- Double-Decked design strengthens the heat insulation.
- Build-in fan & heater make sure the mechanism works in a certain temperature.
- Wall mount bracket or pendant mount bracket selectable.
- A stainless steel retaining cable.
- Fluorocarbon Baking Varnish: Endurable environment, resistible acid & base, five years warrant. (Optional)



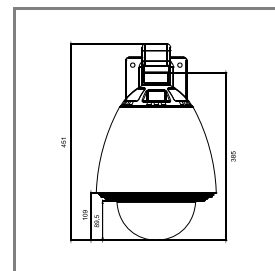
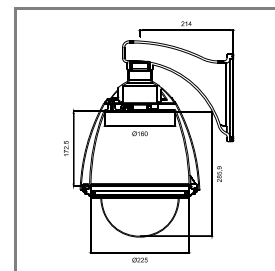
Copyright by 2007 Eastel Taiwan, Inc.

VIDEOTREC



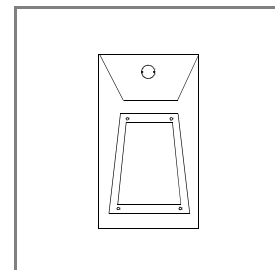
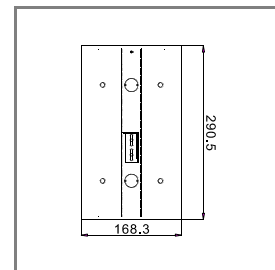
VT-27W 7" Dome Camera Enclosure

- 7" Aluminum Dome Enclosure, suitable for outdoor and indoor installation.
- Double-decked design strengthens the heat insulation.
- Meet IP66 protection level.
- Build-in Fan & Heat make sure the mechanism works in a certain temperature (Optional).
- A stainless steel retaining cable.
- A body takes shape the two-course construction, the interior has ventilates the outer-flow patent design.
- Power Box (Optional).
- Fluorocarbon Baking Varnish: Endurable environment, resistible acid & base, five years warrant. (Optional)
- Nitrogen Pressurize-able Dome Enclosure IP 68 (Optional).



VT-8S Corner Camera Housing

- Accept all standard CCTV cameras.
- Maximize flexibility during installation.
- LEXAN polycarbonate window with ABS cover.
- Fixed part with rugged heavy gauge steel construction.
- Maximum Camera / Lens Dimension: 150 mm (L)



VT-606 Camera Housing

- Outdoor back open camera housing.
- Aluminum camera enclosure.
- Appearance Size: 147x 140x 470mm
- Suitable Camera Size: 105x 100x 320mm
- Control Temperature: Heater (ON/15°C · OFF/25°C)
Blower(ON/35°C · OFF/25°C)
- Input Voltage: DC 12V / AC 24V / 110VAC / 220VAC
- Packing; 10pcs in one carton.



VT-607 Camera Housing

- Outdoor back open camera housing.
- Aluminum camera enclosure.
- Appearance Size: 157x 130x 460mm
- Suitable Camera Size: 108x75x 300mm
- Control Temperature: Heater (ON/15°C , OFF/25°C)
Blower(ON/35°C , OFF/25°C)
- Input Voltage: DC 12V/ AC 24V / 110VAC / 220VAC
- Packing:6pcs in one carton.