

IP-3410A Video Server

VIDEOTREC



Introduction

IP-3410A series video servers are stand – alone video / audio streaming servers designed for professional IP surveillance applications. With an embedded web browser, users can access streaming video / audio like browsing a regular website. IP-3410A series has several unique features, for instance, the full high – quality video format support and bi-directional audio streaming, which can improve your system stability and peripheral support ability.

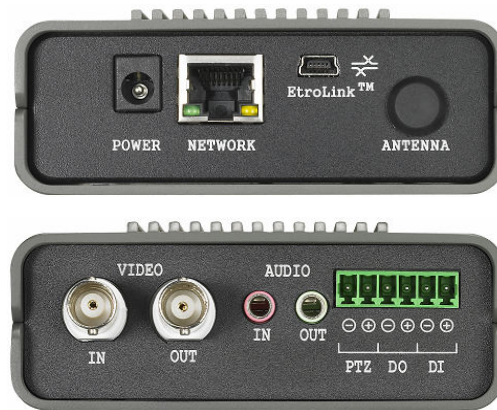


Main Features

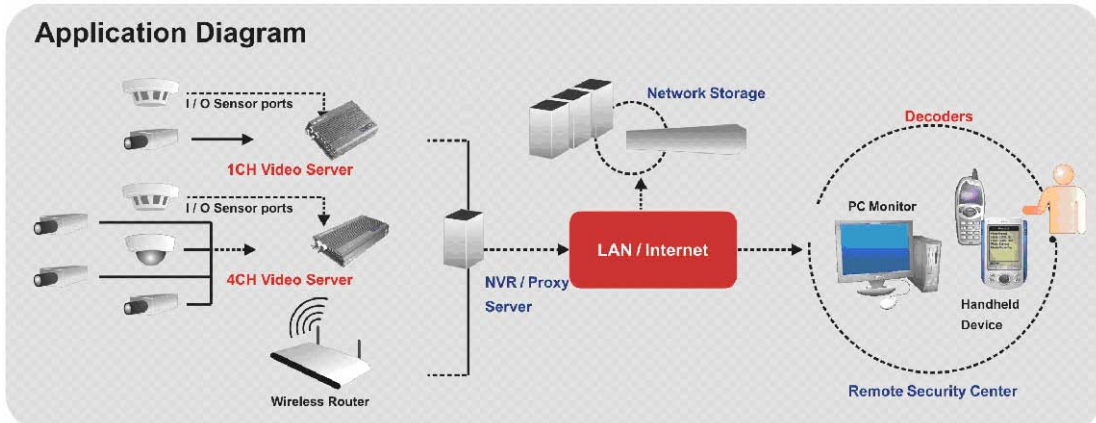
- M-JPEG/MPEG1/MPEG2/MPEG4 HW Compression (IP-3110A/IP-3410A).
- M-JPEG/MPEG4 HW Compression (IP-3130A/ IP-3131).
- FPS: 30 frames @ D1 size.
- Full Duplex Audio (except IP-3131).
- Built-in web viewer.
- DDNS Support.
- Video Input: 1CH (IP-31XX) / 4CH (IP-34XX).
- Built-in Motion Alarm with Configurable Detection Areas.
- Friendly Preview windows for video quality adjustment.
- Support Windows/WinCE/.NET/Linux.

I/O Connectors

- 12V DC Power
- 10/100Mbps Ethernet Port
- Video In Connector
 - IP - 31XX: 1 BNC Video Input
 - IP - 34XX: 4 BNC Video Input
- Video Output (Loop Through)
- Audio Input and Output ports
- Digital I/O (1 Input and 1 Output)
- RS485 PTZ Camera Control







Application Diagram



Copyright by 2007 Eastel Taiwan, Inc.

IP-3410A Video Server

Technical Specification

	IP-3410A	IP-3110A	IP-3130A	IP-3131
				
Image				
Video Input	4CH NTSC/PAL	1CH NTSC/PAL		
Video Output	1CH NTSC/PAL			N/A
Image Resolution	D1, 4CIF, VGA, CIF, QVGA, QCIF, QQVGA		D1, CIF, QCIF	
Compression – Video				
Format	M-JPEG, MPEG-1/2/4		M-JPEG, MPEG-4	
Frame Rate	Up to 30fps (NTSC) / 25fps (PAL) @ D1 Resolution			
Compression – Audio				
Audio	Full Duplex, Stereo, ADPCM/MP3			N/A
IP Network				
Ethernet	10/100 Base – T			
Protocol	TCP/IP, DHCP, PPPoE, HTTP, DDNS, FTP, SMTP			
I/O Connector				
Network	1 x RJ – 45			
Analog Audio	1 x Input, 1 x Output			
Analog Video	BNC 4 x In / 1 x Out	BNC 1 x In / 1 x Out		
Output DIO/PTZ	1 x DI, 1 x DO, 1 x RS485			1 x RS485
Power & ME Info.				
DC Output	DC 12V / 650mA	DC 12V / 550mA	DC 12V / 350mA	DC 12V / 350mA
Dimension (mm) / Weight	95 x 150 x 36 / 500g	95 x 150 x 36 / 460g	95 x 150 x 36 / 440g	68 x 61.8 x 31.6 / 170g

Copyright by 2007 Eastel Taiwan, Inc.